

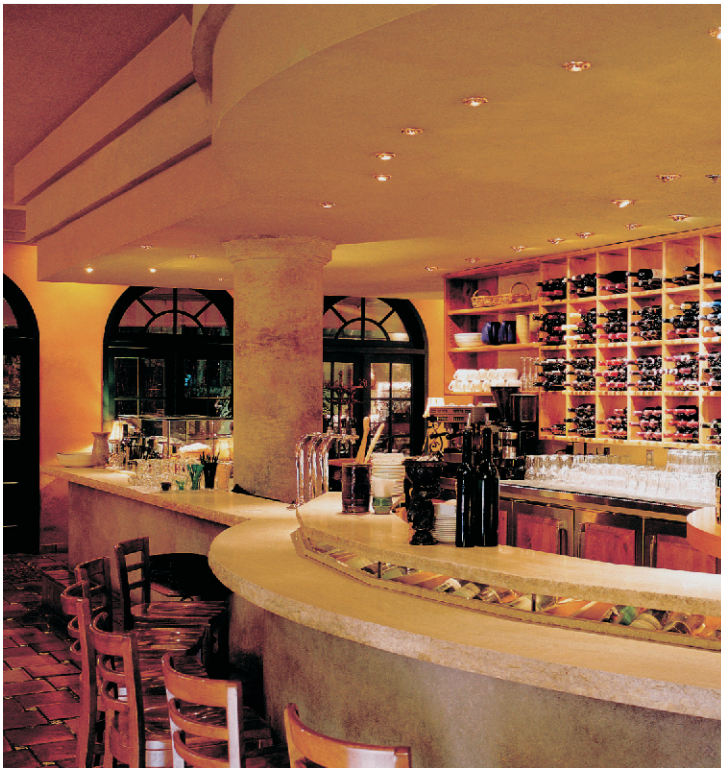


Light Power

Recessed Down Lighting MARIA LUMINAIRE

MARIA Product Description

The Maria is a compact recessed LED down light suitable for commercial and residential applications. Low energy consumption, long operating life and no lamp maintenance make it ideal for areas with long hours of operation or difficult access such as restaurants, hotels, shopping malls, commercial reception areas, lobbies, and office spaces. Payback on investment is measured in months, not years.



Features and Benefits

- Light output of 450 lumens
- Nominal input power of 7 Watts
- Useful life of 70,000 hours (to 70% of initial light output)
- CRI of 90+
- Standard 3200K*
- Clear or frosted lens**
- Powder coat** or plated†trim finish
- High quality die cast bezel and housing
- Precision machined aluminum CNC heatsink
- Frame kit or insulated ceiling can available)
- Virtually no maintenance



Ordering info

Model	Finish	Colour Temp*	Lens
MAR-007-32-01-80-000	White Powder**	3200K	Clear
MAR-007-32-20-80-000	Chrome Plated†	3200K	Clear
MAR-007-32-01-81-000	White Powder**	3200K	Frosted
MAR-007-32-20-81-000	Chrome Plated†	3200K	Frosted

* 3500K and 4100K also available.

**Powder Coat also available in black.

† Plated also available in Bright Nickel, Brass and 24K Gold.

