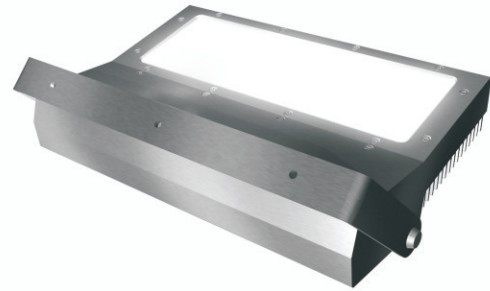




UPE Product Description

The UPE is an outdoor LED light designed to enhance buildings and landscaping. These fixtures can either stand alone, illuminating architectural and garden features from the ground up, or be wall-mounted. The low energy consumption and zero-maintenance advantages provide significant reductions in operational costs, making these products an ideal choice for creating ambiance and drawing attention.



Features and Benefits

- High system efficacy
- Wide distribution
- Full cut-off for reduced glare and light trespass
- Nominal input power of 90 Watts
- Useful life of 70,000 hours (to 70% of initial light output)
- CRI of 90+
- Standard 5000K
- Rugged extruded aluminum housing
- Black, Matte Silver, Bright or Matte Gold anodized finish
- Wall or ground mounted

Ordering info

Model	Finish	Colour Temp	Lens
UPE-090-50-10-80-000	Black Anodized	5000K	Clear
UPE-090-50-11-80-000	Matte Silver Anodized	5000K	Clear
UPE-090-50-12-80-000	Bright Anodized	5000K	Clear
UPE-090-50-13-80-000	Matte Gold Anodized	5000K	Clear

